

ZOOLOGY - TOTAL 235 CHARTS

CELLS & TISSUES - 11 CHARTS

- CH 301 Animal Cell (Ultra Structure)
- CH 302 Animal Mitosis (Cell Division)
- CH 303 Animal Meiosis (Cell Division)
- CH 304 Animal Tissues-I
- CH 305 Animal Tissues-II
- CH 306 Animal Tissues-III
- CH 306A Nerve Cell
- CH 307 Gametogenesis
- CH 308 Fertilization in Animals
- CH 309 Oogenesis
- CH 310 Spermatogenesis

PROTOZOA - 7 CHARTS

- CH 315 Amoeba Structure & Locomotion
- CH 36 Plasmodium vivax
- CH 317 Paramecium Structure
- CH 318 Paramecium Rep.-I
- CH318 A Paramecium Rep.-II
- CH 319 Euglena Structure & L. H.
- CH 33 Entamoeba (Life Cycle)

PORIFERA - 4 CHARTS

- CH 325 Phylum Porifera
- CH 325A **Sponge Gemmule**
- CH 326 Sycon Development
- CH 326 A Canal Systems in Sponges

COELENTERATA - 6 CHARTS

- CH 327 Obelia Structure
- CH327A Corals & Coral Reefs
- CH 328 Hydra structure & Internal Anatomy
- CH 328A Aurelia str. & Life History
- CH 329 Sea Anemone External
- CH 329A Sea Anemones Anatomy

PLATYHELMINTHES - 5 CHARTS

- CH 37 Ascaris Internal Structure of Male & Female
- CH 330 Taenia solium Structure & L. H. (Tapeworm)
- CH 38 Liverfluke Str. & Life History
- CH 39 Ancylostoma duodenale Life Cycle (Hook Worm)

CH 39A Planaria

ANNELIDA - 14 CHARTS

- CH 334 Earthworm External Characters
- CH 335 Earthworm internal Anatomy
- CH 336 Earthworm Development
- CH 337 Earthworm Reproductive System
- CH 338 Earthworm Nervous System
- CH 339 Earthworm Digestive System
- CH 340 Earthworm Excretory System
- CH 341 Earthworm Circulatory System

CH 343 Leech External

CH 343A Leech Digestive

CH 343B Leech T.S

CH 343C Leech Reproductive

CH 343D Leech Nervous System

CH 344 Neries

ARTHROPODA - 37 CHARTS

- CH 352 LAC Insect
- CH 353 Beneficial Insects
- CH 354 Harmful Insects
- CH 355 Food Grain Pests
- CH 355A Insects Mouth Parts
- CH 356 Housefly L.H
- CH 357 Mosquito L. H. showing comparison of Culex & Anopheles
- CH 358 Butterfly L.H.
- CH 358A Types of Butterfly
- CH 359 Honey Bee L.H.
- CH 360 Silkworm L.H.
- CH 361 Grasshopper L.H.
- CH 361A Grasshopper Digestive System
- CH 362 Cockroach L.H.
- CH 362 A Cockroach Anatomy
- CH 363 Cockroach External Character
- CH 363 A Cockroach Mouth Parts
- CH 364 Cockroach Digestive System
- CH 365 Cockroach Respiratory system
- CH 366 Cockroach Circulatory System
- CH 367 Cockroach Nervous system

- CH 368 Cockroach Reproductive system
- CH 368 A Cockroach Excretory
- CH 369 Prawn Internal Anatomy
- CH 370 Prawn External Anatomy
- CH 371 Prawn Reproductive system
- CH 372 Prawn Digestive system
- CH 373 Prawn Excretory system
- CH 374 Prawn Nervous System
- CH 375 Prawn Circulatory system
- CH 376 Scorpion External character
- CH 376A Scorpion Digestive System
- CH 376B Scorpion Circulatory
- CH 376C Scorpion Nervous
- CH 376D Scorpion Reproductive
- CH 377 **Spider**
- CH 378 **Millepede**

MOLLUSCA - 13 CHARTS

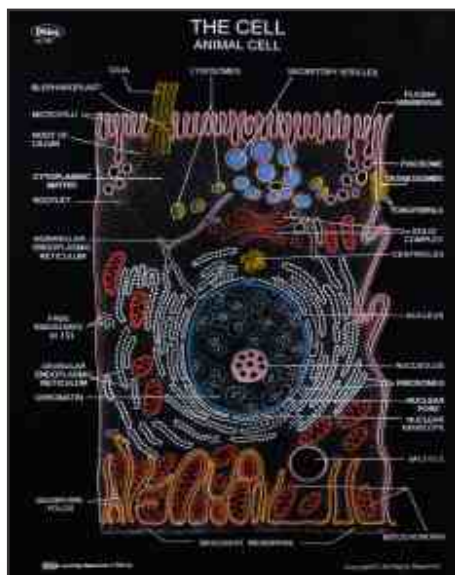
- CH 380 Pila External Characters
- CH 381 Pila Reproductive System
- CH 382 Pila Circulatory System
- CH 383 Pila Nervous System
- CH 384 Pila Sense Organs
- CH 385 Pila Res. & Excretory system
- CH 386 Pila Digestive System
- CH 387 Unio External Characters
- CH 388 Unio Circulatory system
- CH 389 Unio Internal Anatomy
- CH 390 Unio Nervous System
- CH 391 Unio Respiratory System
- CH 392 Unio Digestive System

ECHINODERMATA-2 CHARTS

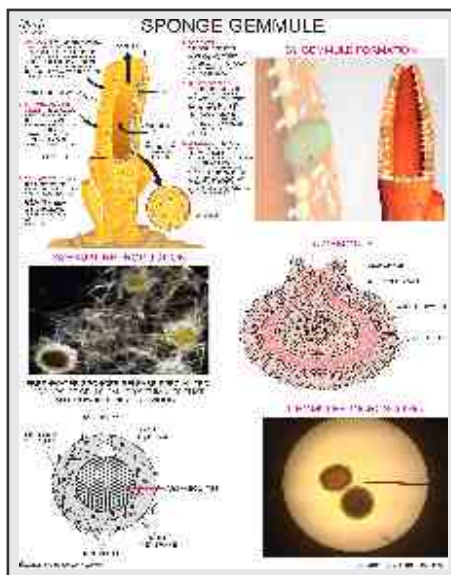
- CH 395 Starfish (Asterias) Ext. Characters & Anatomy
- CH 396 Starfish (Asterias) Water Vascular System

PISCES - 23 CHARTS

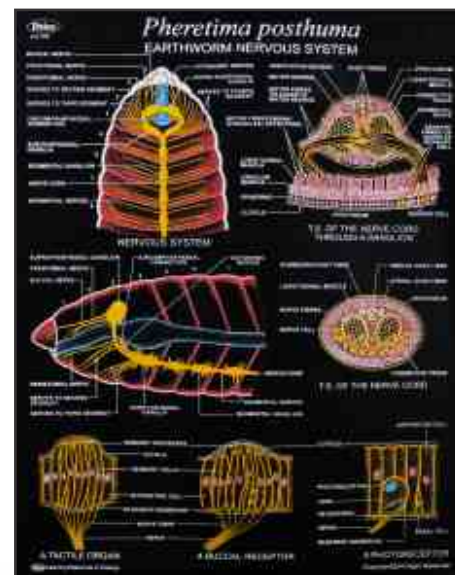
- CH 401 Scoliodon External Characters
- CH 402 Scoliodon General Viscera
- CH 403 Scoliodon Digestive System



CH 301



CH 325A



CH 338

- CH 404 Scoliodon Brain different views
- CH 405 Scoliodon Skeleton
- CH 406 Scoliodon Skull
- CH 407 Scoliodon Urinogenital System
- CH 409 Scoliodon Venous Aystem
- CH 409A Scoliodon Arterial System
- CH 410 Scoliodon Cranial Nervous System
- CH 411 Scoliodon Receptor organs
- CH 412 Labeo rohita External Characters
- CH 413 Labeo rohita Axial Skeleton
- CH 414 Labeo rohita Skull
- CH 414A Labeo rohita Digestive
- CH 414B Labeo rohita Respiratory
- CH 414C Labeo rohita Urinogenital
- CH 414D Labeo rohita Eye & ear
- CH 414E Labeo rohita Heart
- CH 414F Labeo rohita Cranial Nervous
- CH 414G Labeo rohita Circulatory
- CH 420 Fish Types
- CH 421 Fish Respiratory System

CHORDATA - 11 CHART

CH 415A Classification Chordates

- CH 415 Amphioxus External Characters
- CH 416 Amphioxus General Anatomy
- CH 417 Amphioxus T.S. through Different Regions
- CH 418 Amphioxus Development
- CH 419 Amphioxus Excretory System

CH 422 Herdmania Metamorphosis

CH 422A Herdmania Development

CH 422B Herdmania External

CH 422C Herdmania Heart & Blood vascular

CH 423 Balanoglossus

AMPHIBIA - 20 CHARTS

- CH 425 Frog External Characters
- CH 426 Frog Internal Anatomy
- CH 427 Frog Skeleton
- CH 428 Frog Skull different views

- CH 429 Frog Development -I Egg to Gastrulation
- CH 430 Frog Development-II Gastrula to Tadpoles
- CH 431 L.H. Frog showing Metamorphosis
- CH 432 Frog Digestive System
- CH 433 Frog Nervous System
- CH 434A Frog Male Reproductive System
- CH 434B Frog Female Reproductive System.
- CH 435 Frog Excretory System
- CH 436 Frog Arterial System
- CH 437 Frog Venous System
- CH 438 Frog Respiratory System
- CH 439 Frog Eye**
- CH 440 Ear**
- CH 443 Frog Skin V.S
- CH 444 Frog Brain different views
- CH 445 Frog Heart different views

OTHERS

- CH 446 Personal Safety
- CH 449 Cow Digestive System

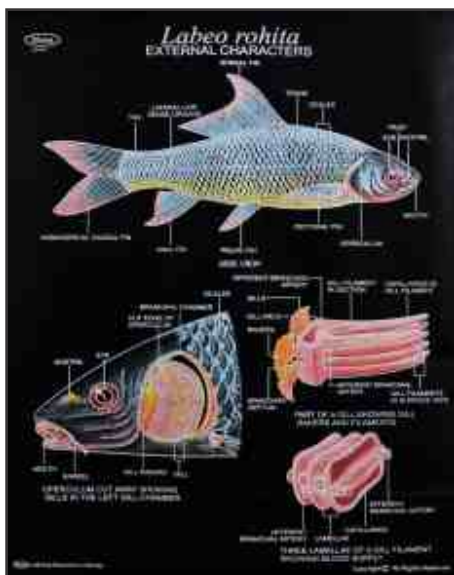
REPTILIA - 17 CHARTS

- CH 450 Chameleon**
- CH 451 Types of Reptiles
- CH 461 Snake Types
- CH 452 Snakes Poisonous & Non poisonous
- CH 453 Varanus Skull Different views
- CH 454 Varanus skeleton
- CH 455 Varanus Circulatory system

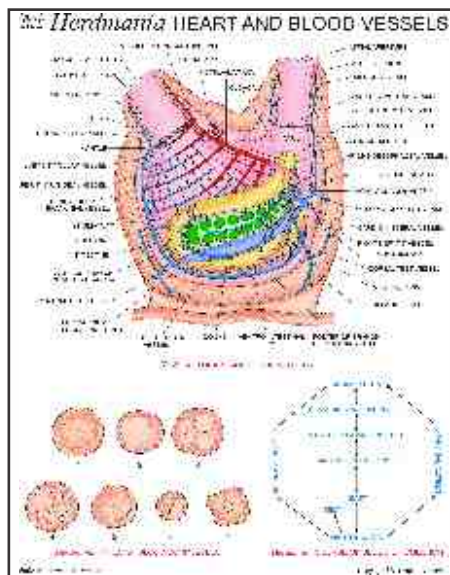
- CH 456 Varanus Excretory system
- CH 458A Calotes External systems**
- CH 458B Calotes Digestive systems**
- CH 458C Calotes Circulatory systems**
- CH 458D Calotes Brain**
- CH 460A Uromastix Digestive system
- CH 460B Uromastix Arterial system
- CH 460C Uromastix Venous system
- CH 460D Uromastix Nervous system
- CH 462 Lizard External & Internal

AVES - 24 CHARTS

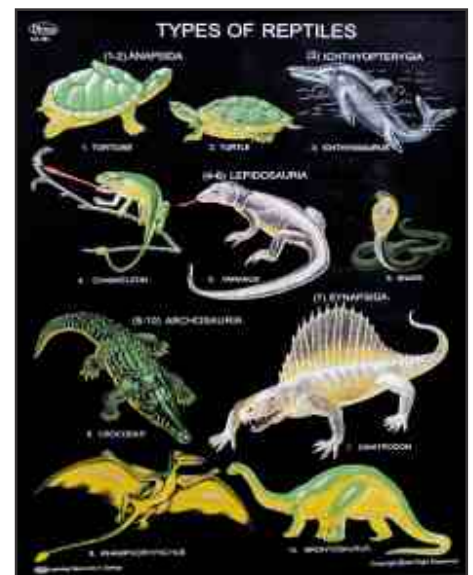
- CH 465 Pigeon External & Internal Characters
- CH 467 Pigeon Skeleton
- CH 468A Pigeon Brain
- CH 468B Pigeon Eye
- CH 468C Pigeon Digestive
- CH 468D Pigeon Arterial
- CH 468E Pigeon Verious
- CH 468F Pigeon Heart
- CH 468G Pigeon Reproductive
- CH 468H Pigeon Ear
- CH 468 I Feather of Pigeon**
- CH 468J Pigeon Development**
- CH 469 Fowl Skeleton
- CH 470 Chick Development
- CH 471 Chick Embryo - 16 Hrs.
- CH 473 Chick Embryo - 24 Hrs.



CH 412



CH 422C



CH 338

CH 477 Chick Embryo - 48 Hrs.

CH480 Chick Embryo - 96 Hrs.

CH480A Chick Digestive

CH480B Chick Circulatory

CH 481 Beaks of Birds

CH 482 Claws of Birds

CH 483 Types of Birds

CH 484 Bat

COMPARATIVE STUDY - 12 CHARTS

CH 510 Vertebrate Hearts

CH 511 Vertebrate Brains

CH 512 Vertebrate Skulls

CH 513 Vertebrate Hind Limbs

CH 513A Vertebrate Fore Limbs

CH 514 Vertebrate Girdles

CH 515 Vertebrate Urinogenital system

CH 516 Vertebrate Embryos

CH 517 Vertebrate Arterial arches Circulation

CH 518 Vertebrate Genital & venous system

CH 447 Placenta Types

CH 448 Distribution of villi

EVOLUTION - 15 CHARTS

CH 521 Animal Kingdom-II (Vertebrates)

CH 521A Animal Kingdom-I (Invertebrates)

CH 521B Classification Invertebrates

CH 522 Evolution of Man

CH 522A Darwin Finches

CH 523 Lamarckism

CH 524 Archaeopteryx

CH 525 Phylogeny of Horses

CH 526 Five Kingdom Classification

CH 527A Endangered Animals

CH 527B Domestic Animals

CH 527C Wild Animals

CH 528A Carnivores Animals

CH 528B Herbivores Animals

CH 528C Omnivores Animals

MAMMALS Total (27 CHARTS)

RAT- (13 CHARTS)

CH 485 Rat External Characters

CH 486 Rat General Anatomy

CH 487 Rat Digestive System

CH 488 Rat Male Reproductive system

CH 489 Rat Female Reproductive system

CH 489A Rat Excretory System

CH 490 Rat Arterial system

CH 491 Rat Venous system

CH 492 Rat Nervous system

CH 493 Rat Respiratory system

CH 494 Rat Skeleton System

CH 495 Rat Brain different views

CH 496 Rat Heart different views

RABBIT - (14 CHARTS)

CH 497 Rabbit External Characters

CH 498 Rabbit General Anatomy

CH 499 Rabbit Digestive System

CH 500 Rabbit Male Reproductive System

CH 501 Rabbit Female Reproductive System

CH 501A Rabbit Excretory System

CH 502 Rabbit Arterial System

CH 503 Rabbit Venous System

CH 504 Rabbit Nervous System

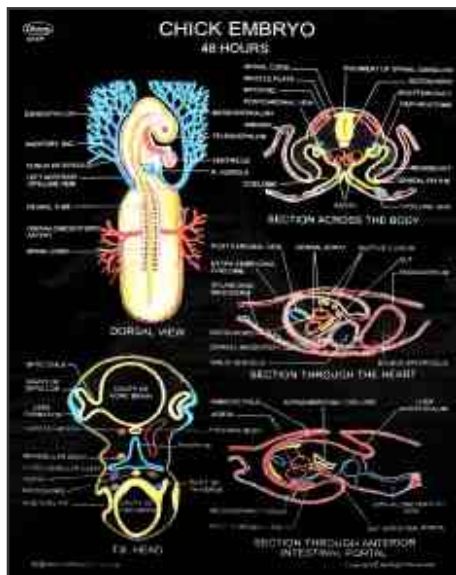
CH 505 Rabbit Respiratory System

CH 506 Rabbit Skeleton

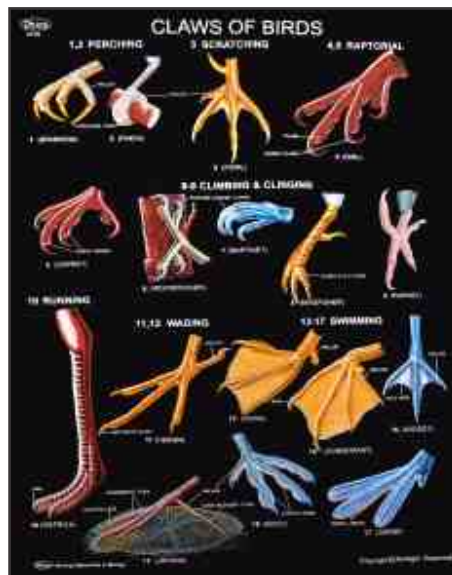
CH 507 Rabbit Brain Different Views

CH 508 Rabbit Heart Different Views

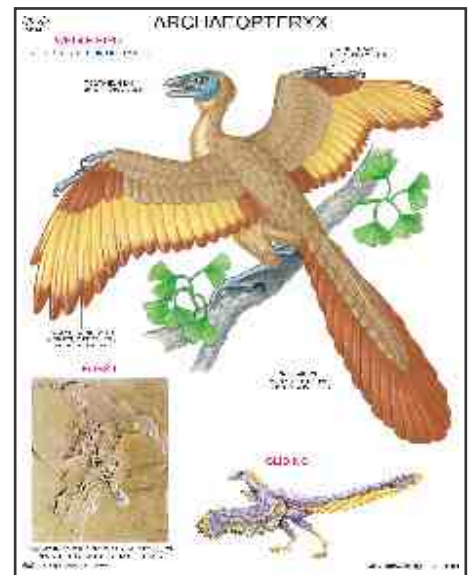
CH 509 Rabbit Skull



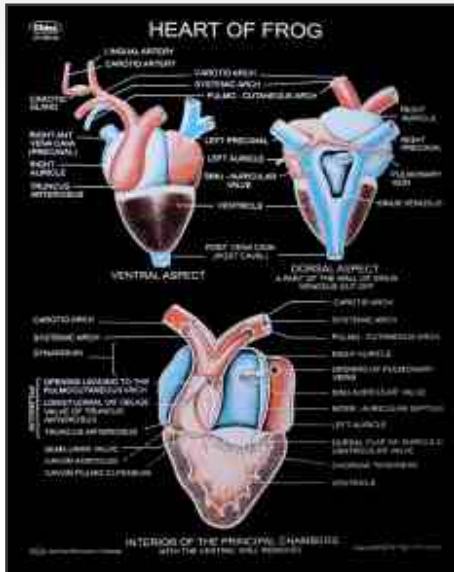
CH 477



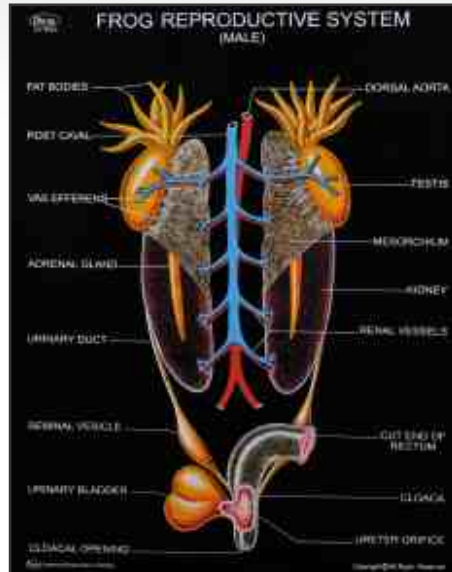
CH 482



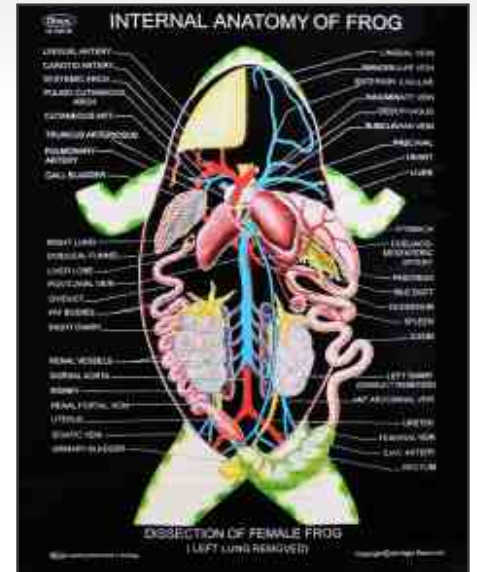
CH 524



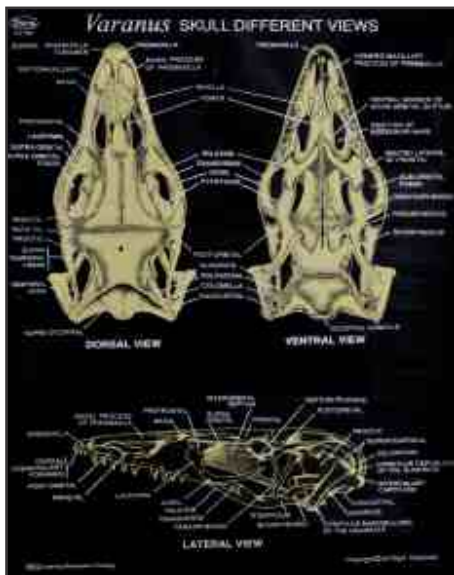
CH 445



CH 434A



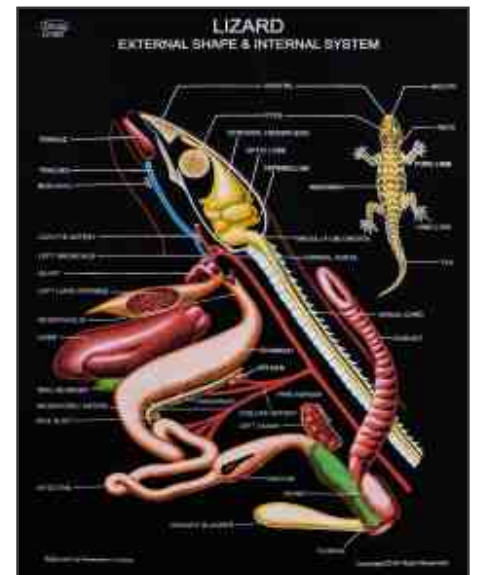
CH 426



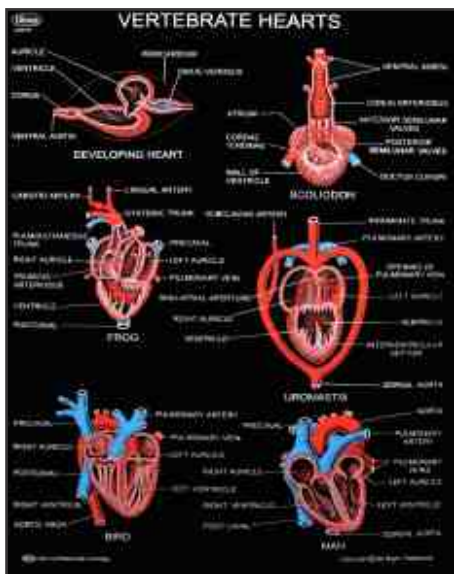
CH 453



CH 451



CH 462



CH 510



CH 483 z



CH 521