

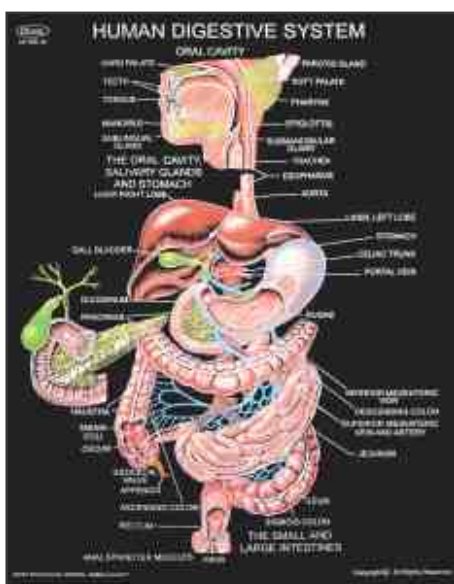
STRUCTURES/ORGANS

- CH 564 Heart
- CH 565 Brain
- CH 566 Spinal Nerves
- CH 567 Skeleton-II (Vertebrae, Sacrum &)
- CH 568 Skeleton III (Girdles & Limbs)
- CH 569 Vertebral Column
- CH 570 Human Skull
- CH 571 Head & Neck
- CH 572 Eye
- CH 573 Ear
- CH 574 Ear, Nose & Throat
- CH 575 Skin
- CH 576 Nephron
- CH 577 Shoulder & Elbow
- CH 578 Hand & Wrist
- CH 579 Hip & Knee
- CH 580 Foot & Ankle
- CH 581 Teeth
- CH 582 Human Liver
- CH 583 Kidney
- CH 584 Pregnancy & Birth
- CH 585 Pharynx & Larynx
- CH 586 Embryo Development
- CH 587 Human Anatomy
- CH 587A Human Blood Cells.
- CH 599 Blood Types
- CH 588 Nose
- CH 589 Tongue
- CH 590 Human Joints
- CH 301 The Cell
- CH 592 Menstrual Cycle

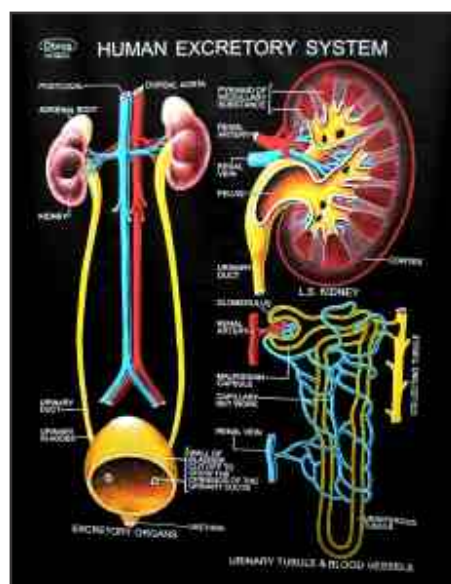
- CH 593 Spinal Cord
- CH 594 Sense organs
- CH 594 Vestigial Organs
- CH 595 Muscles
- CH 596 Bones & Cartilage
- CH 309 Oogenesis
- CH 310 Spermatogenesis
- CH 10 DNA
- CH 11 RNA

SYSTEMS OF HUMAN BODY

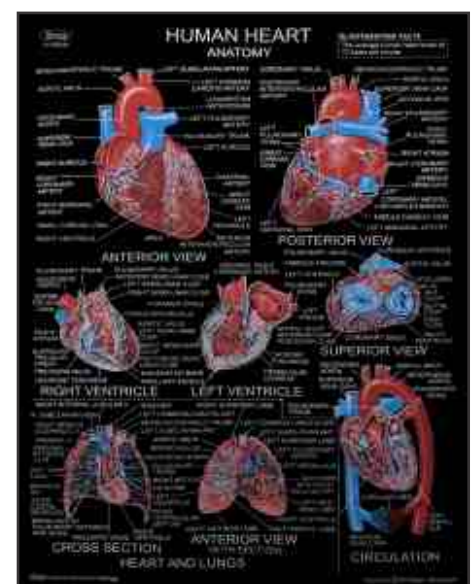
- CH 551 Muscular System
- CH 551A Muscular Back View
- CH 552 Skeleton-I (Entire skeleton, vertebral)
- CH 552A Skeleton (Back view)
- CH 553 Nervous System
- CH 554 Autonomic Nervous System
- CH 555 Arterial System
- CH 556 Venous System
- CH 557 Lymphatic System
- CH 558 Digestive System
- CH 548 Intestine Large-Small
- CH 549 Pancreas
- CH 550 Stomach
- CH 559 Respiratory System
- CH 598 Lungs
- CH 560 Excretory System
- CH 561 Female Reproductive System
- CH 562 Male Reproductive System
- CH 563 Endocrine System
- CH 597 Human Immune System



CH 558



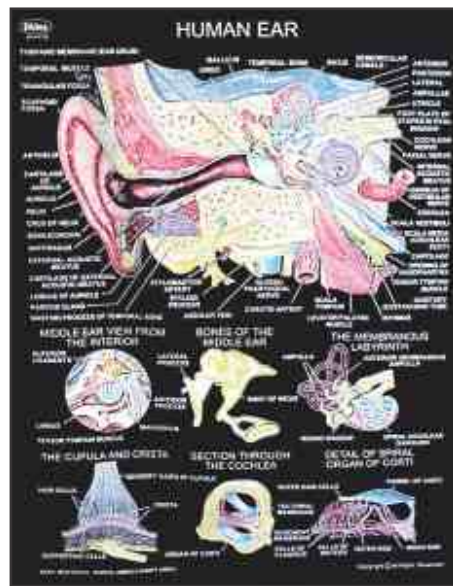
CH 560



CH 564



CH 569



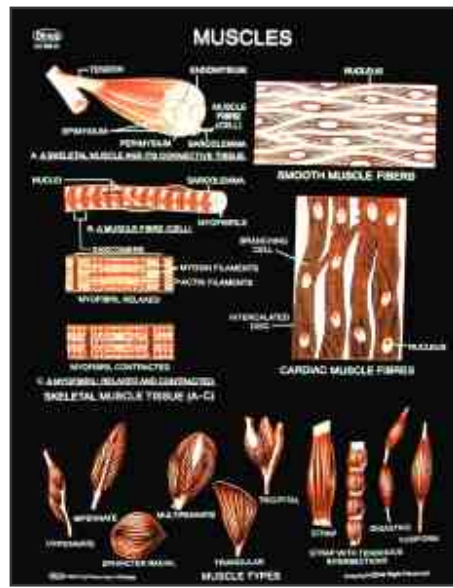
CH 573



CH 574



CH 579



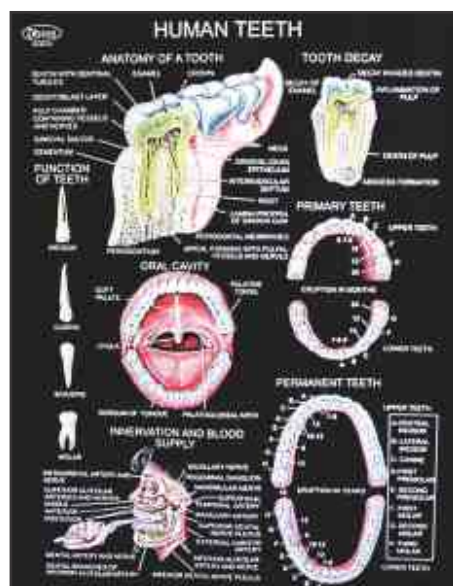
CH 595



CH 590



CH 584



CH 581



CH 594