

BIOLOGY -TOTAL 111 CHARTS

CYTOLOGY TOTAL 20 CHARTS

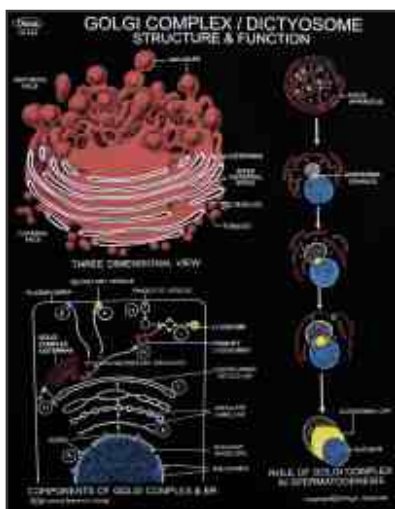
- CH 142 Cell Cycle
- CH 01 Cell Membrane
- CH 01A Plasma Membrane
- CH 02 Plant Cell Wall
- CH 02a Cell Organelles
- CH 03 Endoplasmic Reticulum
- CH 04 Mitochondria
- CH 05 Golgi Complex
- CH 06 Chloroplast
- CH 07 Nucleus
- CH 08 The Chromosome
- CH 08 A Gene Map - Male
- CH 08B Gene Map - Female
- CH 09 Protein Synthesis
- CH 10 D.N.A.
- CH 11 R.N.A.
- CH 12 Centrioles , Flagella & Cilia
- CH 1127 Enzymes
- CH 13A Ribosomes & Lysosomes
- CH 14 Microbodies
- GENETICS - 16 CHARTS**
- CH 15 Monohybrid Crossing-Incomplete Dominance
- CH 16 Dihybrid Crossing
- CH 17 Monohybrid Crossing
- CH 18 Mendelian Explanation Garden Pea-Complete Dominance
- CH 19 Sex linked inheritance in Drosophila
- CH 20 Codominance (Coat. Colaur in Andalusian fool)
- CH 22A Mutations & Chromosomal Aberrations
- CH 22B Linkage & Crossing Over
- CH 283 Analogous Organs: Plants
- CH 284 Homologous Organs: Plants
- CH 285 Analogous Organs: Animals
- CH 286 Homologous Organs: Animals
- CH 287 Pedigree Analysis: Rolling Tongue
- CH 288 Pedigree Analysis: Blood Group
- CH 289 Pedigree Analysis: Color Blindness
- CH 290 Pedigree Analysis: Widow's Peak
- PARASITOLOGY & DISEASES - 30CHARTS**
- CH 23 Cardiovascular Disease
- CH 24 Malaria

Red Colored Charts on White Rexine.

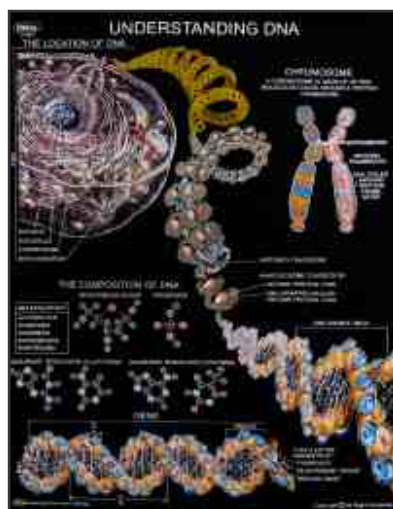
Dbios Charts size 75x100cms. On Black / White Raxine

- CH 25 Tuberculosis
- CH 26 Cholera
- CH 27 Typhoid
- CH 28 Dysentery
- CH 29 Diarrhoea
- CH 30 Filariasis
- CH 31 Leprosy
- CH 32 Pathogenic Protozoa
- CH 33 Entamoeba (Life Cycle)
- CH 34 AIDS (Acquired Immuno Deficiency)
- CH 34A Influenza
- CH 35 Enterobius vermicularis (Pinworm)
- CH 36 Malarial Parasite Life History (Plasmodium vivax)
- CH 37 Ascaris lumbricoides Life History
- CH 37A Ring Worm
- CH 38 Fasciola hepatica (Liver Fluke)
- CH 39 Ancylostoma duodenale (Hookworm)
- CH 40 Deficiency Diseases
- CH 40A Goitre
- CH 40B Scurvy
- CH 40C Night Blindness
- CH 40D Rickets
- CH 40E Kwashiorkor
- CH 40F Marasmus
- CH 41 Vectors of Human Diseases
- CH 42 Colour Blindness & Hemophilia
- CH 43 Prevention of Diseases
- CH 43A L.H. Leishmania & Tryposoma
- NUTRITION TOTAL 8 CHARTS**
- CH 44 Balanced Diet
- CH 44A Vitamins
- CH 44B Weight for Height.
- CH 44C Carbohydrates
- CH 44D Fats
- CH 44E Fibers
- CH 44F Minerals
- CH 44G Proteins
- ECOLOGY - 31 CHARTS**
- CH 56 Ozone Layer
- CH 57 Green House Effect
- CH 58 Seasons
- CH 59 Biogas Plant
- CH 60 Water Cycle
- CH 61 Nitrogen Cycle
- CH 62 Carbon Cycle

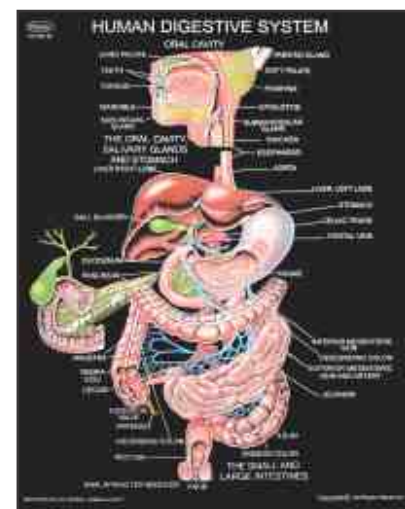
- CH 63 Oxygen Cycle
- CH 64 Environmental Pollution
- CH 65 Food Web
- CH 66 Food Chain
- CH 66A Energy Flow Food Pyramid
- CH 67 Land Pollution
- CH 68 Phosphorous Cycle
- CH 69 Sulphur Cycle
- CH 152 Hydrophytic Plants
- CH 154 Xerophytic Plants
- CH 154A Xerophytic Animals
- CH 154B Aquatic Animals
- CH 155 Mesophytic plants
- CH 156 Epiphytic plants
- CH 156A Orchid plants
- CH 157 Insectivorous plants
- CH 157A Drossera
- CH 157B Nepenthes
- CH 158 Fossil Plants
- CH 158A Rhynia
- CH 160 Hydrilla
- CH 291 Hydrosere
- CH 292 Xerosere
- CH 294 Adaptation : Plant & Animal
- PLANT PHYSIOLOGY - 11 CHARTS**
- CH 45 Plant Respiration
- CH 46 Plant Transpiration
- CH 47 Plant Osmosis & Root Pressure
- CH 47A Plasmolysis & Diffusion
- CH 48 Photosynthesis - Light Reaction
- CH 49 Photosynthesis - Dark Reaction
- CH 50 Glycolysis
- CH 51 Krebs Cycle
- CH 54 Cellular Respiration
- CH 55 Photosynthesis
- CH 282 Emasculation, Bagging & Tagging
- PLANT PATHOLOGY**
- CH 104 Plant Diseases : Bacterial & Viral
- CH 105 Plant Diseases: Fungal
- MEDICINAL PLANTS**
- CH 106 Medicinal Plants -I (Exported from India)
- CH 107 Medicinal Plants -II (Imported in India)
- CH 108 Medicinal Plants -III (Endangered Species)
- CH 109 Medicinal Plants -IV (Prohibited to Export from India)



CH 05

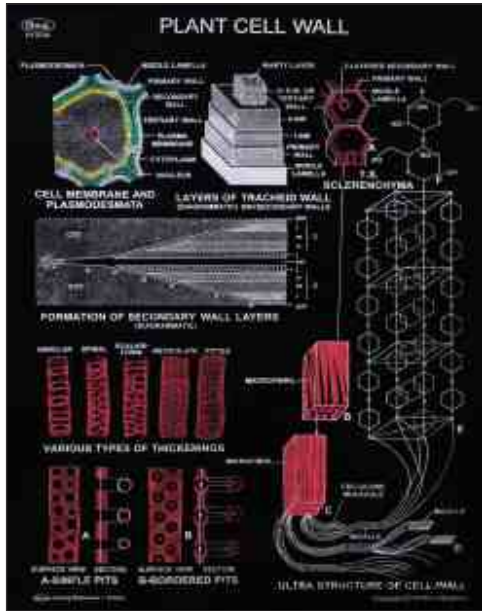


CH 10

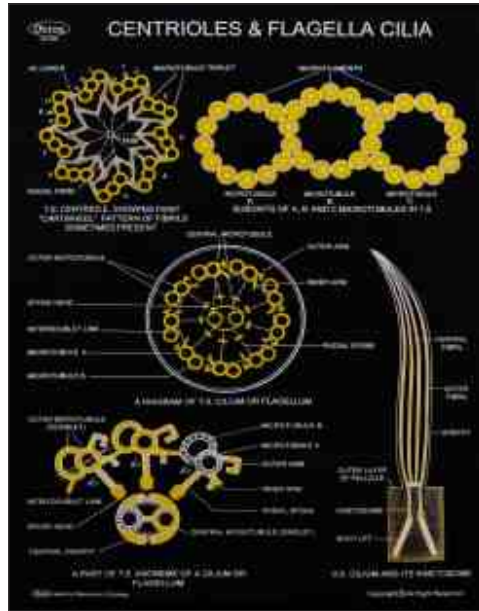


CH 558

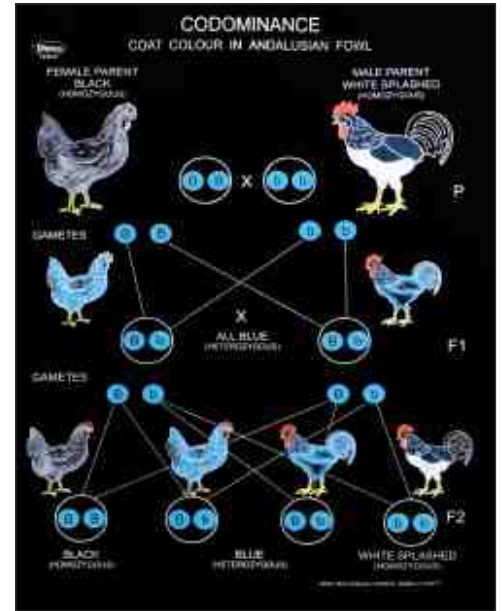
Ask for Medical : Anatomy, Physiology, Bio-Chemistry, Pharmacology, Microbiology, PSM, FMT Charts



CH 02



CH 12



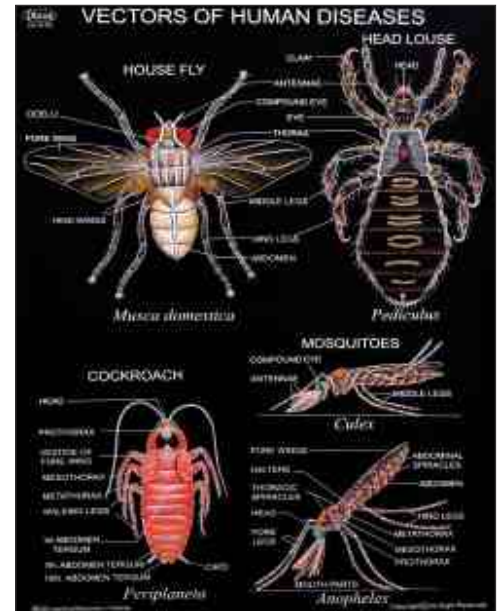
CH 20



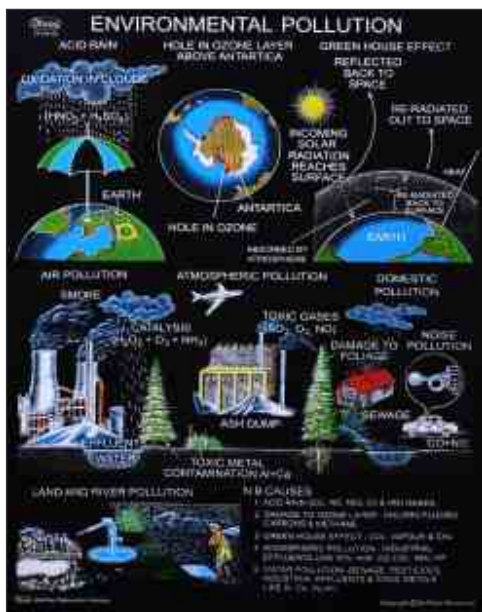
CH 29



CH 31



CH 41



CH 64



CH 154



CH 158